

1.0 Hardware installation

Figure 1.1 board layout

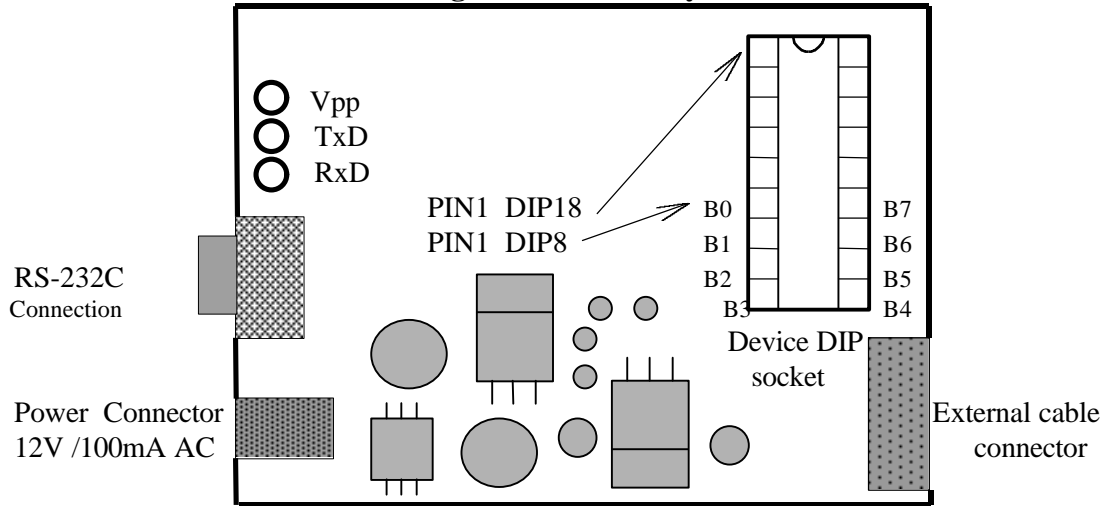
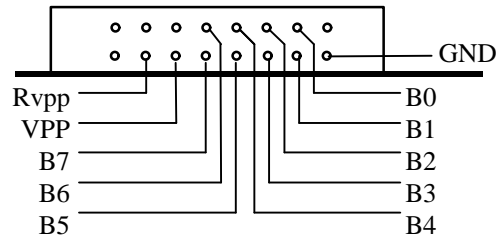


Figure 1.2 External cable connector



2.0 External Cable Connection

2.1 MC68HC11 packages

DEVICE	ROM	RAM	EEPROM	B2 TxD	B3 RxD	B4 MB	B5 RES	GND	XTAL		PACKAGE
HC11A8	E000H- FFFFH	0000H- 00FFH	B600H- B7FFH	21 43 50	20 42 47	2 24 25	17 39 43	1 23 24	7 29 31	8 30 33	PLCC52 DIP48 QFP64
HC(7)11E9	D000H- FFFFH	0000H- 01FFH	B600H- B7FFH	21 43 50 40 22	20 42 47 39 20	2 24 25 21 2	17 39 43 36 17	1 23 24 20 1	7 29 31 26 7	8 30 33 27 8	PLCC52 DIP48 QFP64 QFP52 SDIP56
HC811E2	---	0000H- 00FFH	F800H- FFFFH	21 43 50 40 22	20 42 47 39 20	2 24 25 21 2	17 39 43 36 17	1 23 24 20 1	7 29 31 26 7	8 30 33 27 8	PLCC52 DIP48 QFP64 QFP52 SDIP56
HC11E20	9000H- AFFFH + D000H- FFFFH	0000H- 02FFH	B600H- B7FFH	21 43 50 40 22	20 42 47 39 20	2 24 25 21 2	17 39 43 36 17	1 23 24 20 1	7 29 31 26 7	8 30 33 27 8	PLCC52 DIP48 QFP64 QFP52 SDIP56
HC(7)11G5	C000H- FFFFH	0000H- 01FFH	---	80	79	42	68	46	44	45	PLCC84
HC11N4	A000H- FFFFH	0080H- 037FH	0D80H- 0FFFH	79	78	76	75	70	73	74	QFP80
HC11F1	---	0000H- 03FFH	FE00H- FFFFH	29 64	28 63	2 32	17 50	1 31	6 36	7 37	PLCC68 QFP80
HC(7)11PH8	4000H- FFFFH	0080H- 087FH	0D00H- 0FFFH	73 82	72 81	20 12	70 79	3 102	66 72	67 73	PLCC84 TQFP112
HC(7)11L6	C000H- FFFFH	0000H- 01FFH	B600H- B7FFH	28 50	26 48	2 25	23 45	1 24	7 30	8 31	PLCC68 QFP64
COLOR	----	----	----								

2.1 MC68HC11 packages (continue)

DEVICE	ROM	RAM	EEPROM	B2 TxD	B3 RxD	B4 MB	B5 RES	GND	XTAL		PACKAGE
HC11KA4	A000H- FFFFH	0080H- 02FFH	0D80H- 0FFFH	62 1	61 64	59 62	58 61	67 6	57 60	56 59	PLCC68 QFP64
COLOR	----	----	----								

2.2 MC68HC05B6/16/32 packages

RAM	EEPROM	B2 TDx	B3 RDx	B4 PD4	B5 RES	B6 PD3	B7 TCP	Rvpp IRQ	GND	BQ		PACKAGE	NOTE
0050H- 00FFH	0100H- 01FFH	52 10 55	50 8 53	9 19 10	18 30 19	11 21 12	22 34 23	19 31 20	41 58 43	16 28 17	17 29 18	PLCC52 QFP64 SDIP56	
COLOR	---												

2.3 MC68HC705B16/16N/32 packages

RAM	EEPROM	B2 TDx	B3 RDx	B4 PD4	B5 RES	B6 PD3	B7 TCP	Rvpp IRQ	GND	BQ		PACKAGE	NOTE
0050H- 00FFH	0100H- 01FFH	52	50	---	18	11	22	19	41	16	17	PLCC52	9= +5V 12=GND
		10	8	---	30	21	34	31	58	28	29	QFP64	19=+5V 22=GND
		55	53	---	19	12	23	20	43	17	18	SDIP56	10 = +5V 13=GND
COLOR	---												

*ROM: B6=(0020H-004FH)&(0800H-1EFFH); B16=(0020H-004F)&(0300H-3DFDH); B32=(0400H-7DFFH).